



MONTHLY MEMBERSHIP PROGRESS REPORT

District 3 L

Results as of: 12/31/2014

GMT: HAL GRIFFIN

LOCATION OKLAHOMA

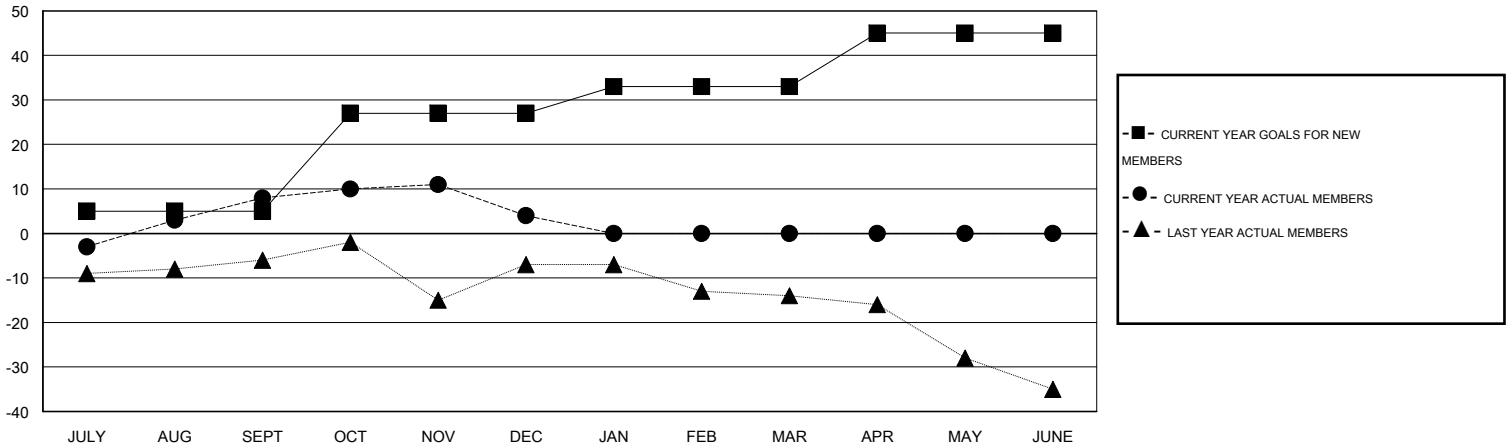
GMT CA 1

Clubs					Members				
RESULTS FOR 2014-2015					RESULTS FOR 2014-2015				
QUARTER	NEW CLUB GOAL	NEW CLUBS	DROPPED CLUBS	NET GAIN/LOSS	QUARTER	NEW MEMBER GOAL	CHARTER AND NEW MEMBERS ADDED	DROPPED MEMBERS	NET GAIN/LOSS
JULY/AUG/SEPT	0	0	0	0	JULY/AUG/SEPT	5	24	16	8
OCT/NOV/DEC	1	0	0	0	OCT/NOV/DEC	22	24	28	-4
JAN/FEB/MAR	0	0	0	0	JAN/FEB/MAR	6	0	0	0
APR/MAY/JUNE	0	0	0	0	APR/MAY/JUNE	12	0	0	0

GOALS AND ACTUAL NEW CLUBS CUMULATIVE



GOALS AND ACTUAL MEMBERS CUMULATIVE



DROPPED CLUBS: 0	24 CLUBS OF 36 ADDED 1 OR MORE NEW MEMBERS	<u>GENDER DISTRIBUTION</u>	
<u>DROPPED MEMBERS</u>		MALE	544 (68.09%)
DECEASED	6	FEMALE	255 (31.91%)
CLUB CANCELLED	0	FAMILY UNIT MEMBERS 119 HEAD OF HOUSEHOLD 59 NON-HEAD OF HOUSEHOLD 60	
OTHER	38		
TOTAL	44		
CLICK HERE FOR HEALTH ASSESSMENT DATA			